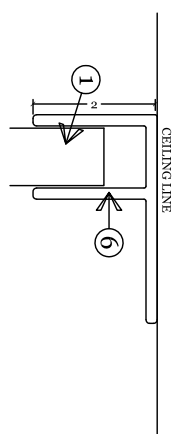
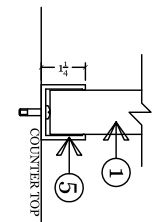


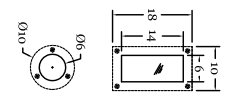
4 SECTION



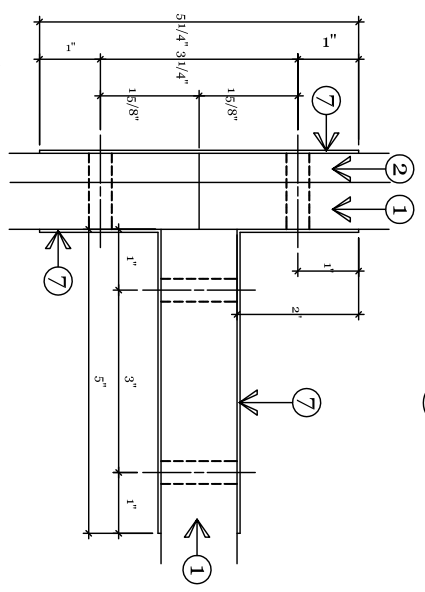
6 HEAD ATTACHMENT (OPTIONAL)



7 U-CHANNEL DETAIL
CONNECTION OF GLASS TO MILLWORK



OPTIONAL CUTOUTS



3 ENLARGED CONNECTION DETAIL

- DRAWING NOTES:**
- BULLET RESISTANT ACRYLIC OR ACRYLIC/POLYCARBONATE COMPOSITE. AVAILABLE IN PROTECTION LEVELS 1,2,3.
 - 1/2 ACRYLIC SLOT LOUVERS.
 - 18 GAUGE BRUSHED STAINLESS STEEL DEAL TRAYS. AVAILABLE SURFACE MOUNTED OR RECESSED (SHOWN). CUSTOM SIZES ARE AVAILABLE.
 - UL RATED BALLISTIC FIBERGLASS FOR UNDERCOUNTER PROTECTION. AVAILABLE IN PROTECTION LEVELS 1,2,3.
 - EXTRUDED ALUMINUM CHANNEL. SIZED TO MATCH THE LEVEL OF ACRYLIC PROTECTION. STANDARD COLORS: ARCHITECTURAL BRONZE AND CLEAR ANODIZED ALUMINUM. CUSTOM COLORS ARE AVAILABLE.
 - ALUMINUM ANGLE OR CHANNEL ATTACHMENT FOR HEAD CONNECTION. (optional)
 - UNIFYING CLIP SYSTEM FOR RIGID STRUCTURAL CONNECTION. AVAILABLE IN CLEAR POLYCARBONATE OR STAINLESS STEEL.
 - ACRYLIC DOWEL SPACERS.
 - VERTICAL SUPPORT BUTTRESS, SIZED PER SYSTEM HEIGHT. COMPOSED OF BULLET RESISTANT GLAZING TO MATCH THE REST OF SYSTEM.